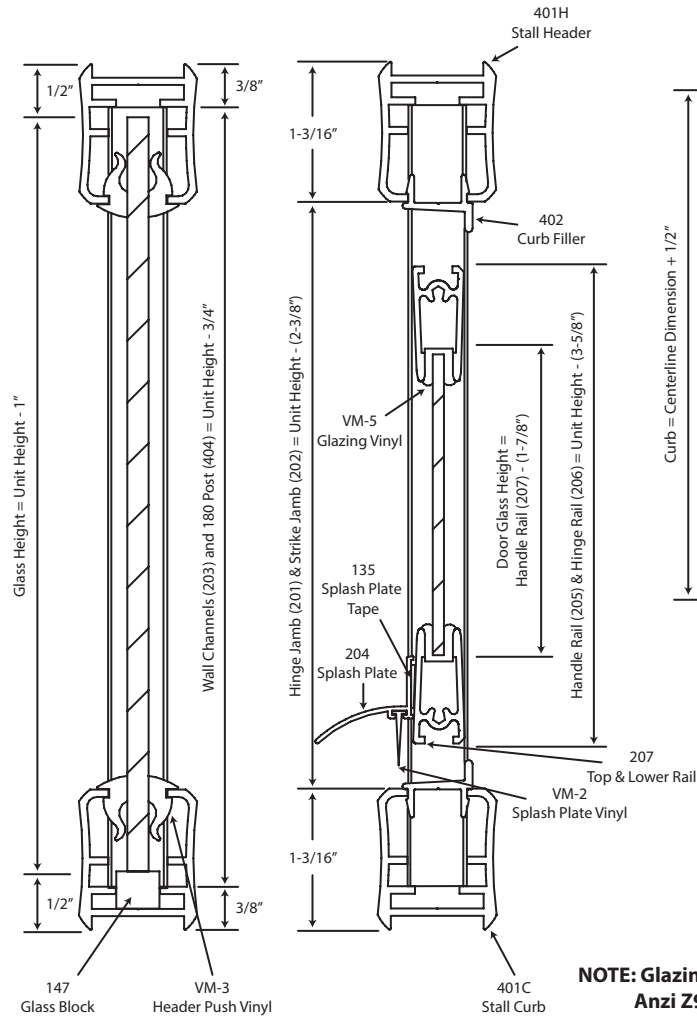


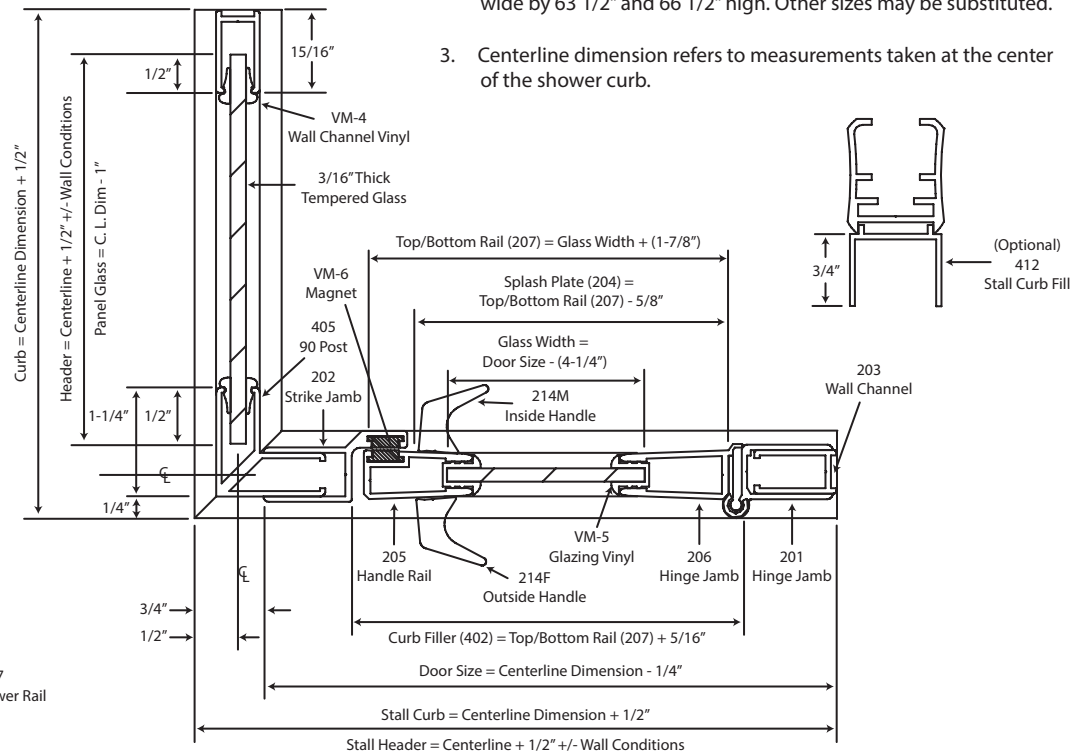
## VERTICAL CROSS SECTION



**NOTE: Glazing material for all KD units and glazed units must conform to Anzi Z97.1 and CPSC Standard 16 CFC 1201 Category I and II.**

## NOTES:

1. Glass bite and overlap of vertical members may be altered to facilitate the use of standard glass sizes or for out of plumb wall conditions.
2. KD door components machined for a maximum glass size of 29 3/4" wide by 63 1/2" and 66 1/2" high. Other sizes may be substituted.
3. Centerline dimension refers to measurements taken at the center of the shower curb.



## HORIZONTAL CROSS SECTION

**SERIES**

**1400/1450  
Door & Return Panel**

**PREMIER**

For Different Sizes of Unit Heights and Unit Widths  
See Price Book

**Splendor**

QUALITY GLASS PRODUCTS  
1133 S. McCord Road  
Holland, Ohio 43628  
Phone: (419) 866.5667